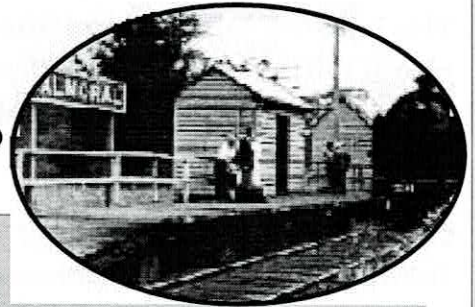


# VILLAGE VOICE

A NEWSLETTER PRODUCED BY THE BALMORAL VILLAGE ASSOCIATION INC.

SUMMER 2008  
ISSUE 33

SPECIAL EDITION



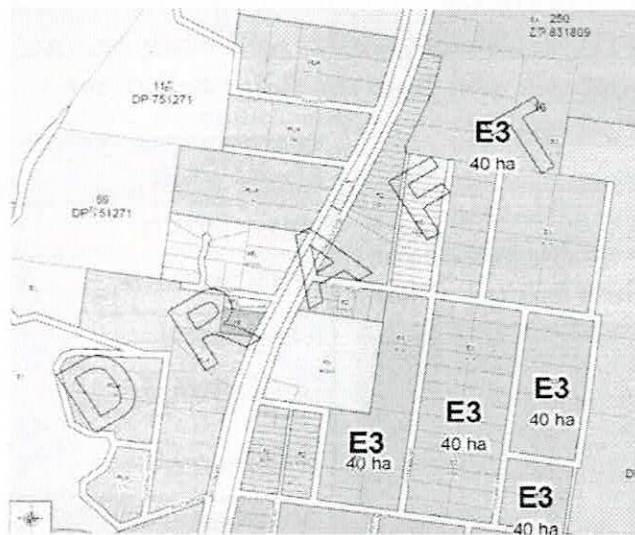
## SAY NO TO DRAFT LEP & SALE OF BALMORAL COMMUNITY LAND 'THIS SHOULD BE OUR LEISURE CENTRE!'

Balmoral Village has a population of approx 350 people with current development proposals which would result in a further 150 new residents.

A large percentage of the Balmoral population are children and presently there are no recreational facilities other than the toddler playground in the Village Hall grounds and the adjacent tennis courts.

Of note, Council are proposing to reclassify 34 sites throughout the shire from Community Land to Operational Land and there the proposed benefits for the sale of these lands includes spending \$681,500 on sites in Bowral, Bundanoon, Mittagong and Moss Vale. Not one cent is proposed to be spent in Balmoral or other northern villages of the shire.

*This matter has been raised previously with Council and the Balmoral Village Association is in receipt from Council's representatives in March 2007, stating that this proposal would not proceed. A Council has since advised that this had not been ratified by Council and was therefore invalid.*



### OUR PROPOSAL~

The Balmoral Village Association demands that Council rescind its proposal to rezone Lots 1 & 2, DP303867 Wilson Drive (Corner of Hall street, opposite Village Hall) from 6D to R5 and re-zone to the new Zone of RE1—Public Recreation.

Furthermore, it is proposed that the Village Association should seek support from Government and other organizations for a grant to develop the site into a Village Green/Sports Ground which could accommodate team sports and a suitable meeting place in the case of emergency (ie Bush Fires).

### WHAT YOU NEED TO DO~

**Have every family member complete a Submission Form & send to council by 21 February, 2008 at PO Box 141, Moss Vale NSW 2577.**

(allow ample postage time) Enclosed are 2 copies of a pre-completed Public Submission Form, or you can complete your own submission copies as provided by Council in the Wingecarribee Today, December 2007 Issue 54. **We need as many of these submissions to be completed & sent to Council.**

**Attend the Public Hearing on Wednesday 20 February 2008 from 5pm till 8pm at the Colo Vale Community Hall, Railway Pde.**

We urge you to attend the Hearing and express your views on this very important issue. We will be writing to Councillors to determine their responses which will be published in the next edition of Village Voice.

**COME ALONG TO THE SITE ON MONDAY 4PM & JOIN PROTEST GROUP PHOTO FOR SOUTHERN HIGHLAND NEWS ARTICLE - KIDS ESPECIALLY WELCOME**



## DRAFT LEP — WINGECARRIBEE SHIRE COUNCIL

**The Locality Discussion Paper for Balmoral Village** outlines the following key points as interpreted into the Draft LEP which is currently on exhibition:

### Commercial Area:

There is no commercial within Balmoral

Proposed Zoning	Current Equivalent Zoning
R2 Low Density Residential	Residential 2c
R5 Large Lot Residential	Residential 2(a1)

### Residential Area

There will be two Residential zones in Balmoral:

#### Low Density Residential

The majority of residential 2(c) zoned land will become R2 Low Density retaining a minimum of 2000m<sup>2</sup>.

Under the draft LEP it is proposed to permit the erection of attached and detached dual occupancy developments in the R2 zones. Subdivision will only be permitted for developments on corner allotments with a minimum of 1000m<sup>2</sup> and which have access to reticulated town water and sewerage systems.\*

Cluster housing is the only form of 'multi unit' housing permissible in the Residential A and Residential 2 (a2) zones under LEP 1989. Under the draft LEP it is intended to prohibit all forms of medium density development within the R2 zone.

#### Large Lot Residential

It is proposed to have 3 areas of large lot residential with a minimum lot size of 4,000m<sup>2</sup>.

North of Station Street, West of Victoria Street

North of Hall Road in vicinity of Parklands Glade

Along Railway north of Lemon Street

With regard to dual occupancy in the R5 zone un-

der the Draft LEP attached dual occupancies will only be permissible with consent. Detached dual occupancies will be prohibited

Attached dual occupancies are currently limited to a max of 90m<sup>2</sup> for sites larger than 1000m<sup>2</sup>.\*

Under the new LEP all forms of multi unit housing including cluster housing will be prohibited in the R5 zone.

### Rural Small Holdings Areas

The existing Rural 1(c) land on the western side of Wilson Drive is to be rezoned to RU4 Rural Small Holdings.

All RU4 land will have a minimum subdivision size of 2 hectares (4.94 acres).

### Rural Land

Land predominantly zoned Rural 1(a) will be zoned E3 Environment Management which has a minimum of 40 hectares subdivision.

### Open Spaced Land (Currently Community Land)

Council has identified a number of existing areas of Public Open Space to be rezoned and reclassified under the draft LEP:

**Lots 1 and 2, DP303867, Wilson Drive**  
**Current Zoning 6(d)\*\* - Proposed R5**

**IT IS THE OPEN SPACED LAND PROPOSAL which urgently requires objection and comment from the Balmoral Village Community.**

\* the development standards for attached dual occupancies will be contained in the relevant DCP.

\*\*Zone No 6 (d) - Recreation Reservation Zone

#### INSIDE THIS ISSUE:

FIRES UPDATE	4
NOTICEBOARD	8
RAINGUAGE	8
KIDS RIDDLES	7
EQUINE FLU	6
SHOOTING FACILITY	6
GARAGE SALE	5



## FROM THE ASSOCIATION PRESIDENT.....LARRY WILSON

The Balmoral Village Association is a non-profit organization formed and run by local residents. The main function of the Association is to manage and maintain the Balmoral Village Hall.

We ask you to help us run and maintain your Hall, by patronizing the Hall and future social functions and assisting whenever and however you can. We are always looking for ideas for the use of the Hall, especially for community,

educational, recreational and social purposes.

The Association also supports residents concerns over local issues which will have an effect on the amenity and quality of life in the Village.

Currently before Council there are three subdivisions in Balmoral which propose approximately 30 new dwellings in the village, which will create additional de-

mands for services and infrastructure. At the same time, in the new LEP, Council wish to re-zone and sell public open space which will be used for an additional five new dwellings.

The Association asks you to have your say on this sale of public land by sending in your comments on the new LEP and attending the meeting at Colo Vale on Wednesday 20th February, 5pm-8pm.

## FROM THE EDITOR.....

Best wishes for the New Year and I hope you and your families have enjoyed a wonderful Christmas. The weather has not quite been as expected and the rain has certainly been very welcome if not forcing us indoors for a little more rest and relaxation than planned.

This year has certainly kicked off with quite a bang—local and state government planning matters to be addressed, the unfortunate con-

tinuation of the EI restrictions and a plenty to do locally with our Garage Sale & Clean Up Australia Day.

I welcome all new residents to Balmoral and invite you to make contributions to the Village Voice at any time and I urge you to take a moment and consider the Wingecarribbee Draft LEP—as it will impact the future growth and sustainability of our community

for our younger generation.

Don't let Council greed and incompetence in managing money be the catalyst for Balmoral to lose its community space.

I look forward to hearing from you or meeting with you soon.  
Kind regards  
Jodie Laing  
Editor

## FROM THE TENNIS CLUB -COME & ENJOY A GAME!

Come and get some light exercise. Bring the whole family, as it is a game everyone can get involved in.

We play Wednesdays at 10am - 2pm.  
We alternate with Hilltop Tennis

Club, playing one Wednesday at our court and the following week at the Hilltop court.

**The Balmoral Tennis Court can be hired at any time.**

Contact Pat Lawrence 48 898 066.

Please ring the night before, so we can arrange things.

Hire costs are very reasonable.



## BRAEMAR GARDEN WORLD LOCALLY OWNED & OPERATED & OFFERING

Quality Plants  
Huge Gift Store  
Potting Mixes & Mulch

Qualified & Friendly Staff  
Quality Plants

Pots & Statues  
Quality Plants  
Gardening Accessories

Open 9am-5pm 7 days  
Lot 117, Hume Highway, Braemar NSW 2575 Tel: 02 4872-1989



## FIRIES UPDATE.....

### 2007/8 Fire Season

The 2007/08 fire season has fortunately been a quiet one so far, thanks mainly to favourable weather conditions. The brigade has not attended any local fires, but some members have joined teams to assist with out of area incidents.

The fire season remains in place until 1<sup>st</sup> April and residents are reminded that no fires can be lit in the open until this date without a fire permit in safe conditions. These permits are available by contacting the captain, Scott Whiting on 48 899 888.

### Christmas Party

The 2007 Christmas Party was held on a somewhat drizzly day in December, but still attracted a healthy turnout. Children played games and enjoyed their barbecue lunch before receiving showbags from Santa.

Thanks to Kevin O'Grady for the

donation of a truckload of water, Larry Wilson for the decorated Christmas tree and Roger Carrus for the Waratah as donations for raffle prizes.

### Farewell Trevor Peddle

In December the brigade said farewell to longstanding President Trevor Peddle, who left the village to enjoy retirement by the seaside on the NSW south coast. Everyone wishes Trevor and Sonia the very best in this next chapter of their lives. His efforts and leadership will be missed by the brigade.

### Annual General Meeting

The Annual General Meeting of the brigade will be held on Wednesday 5<sup>th</sup> March commencing at 7:30pm in the Balmoral Village fireshed.

At the meeting reports will be given for the previous twelve months and office bearers for the upcoming year

will be elected.

### Membership / Meetings

With a growing village it would be nice to see some new volunteer members joining the fire brigade. Membership will provide you with equipment and training and will teach you about fire behaviour and safety. Volunteering will also provide you with the opportunity to work in a collegial and social team of local residents.

If you would like to join the brigade, formal business meetings are held on the first Wednesday of each month at the fireshed at 7:30pm, with less formal and training meetings held each other Wednesday nights. All residents are invited to come along and become members.

*Paul Mallia (Secretary)*

**ADVER-  
TISE  
YOUR  
BUSI-  
NESS  
HERE!**

balmoralvillageas-  
soc@yahoo.com.au or call  
Jodie 0411 274708

**Throw A  
Party At  
the Village  
Hall  
Reasonable  
rates**



**Call Larry  
48 898 151**

**FOR HIRE  
DIY KANGA MINI  
EXCAVATOR  
DO THE JOB IN HALF  
THE TIME**

Midweek  
\$120 pd or 2 days \$200 inc GST

Weekend  
\$140 pd or 2 days \$220 inc GST  
Includes Delivery, Training &  
Pickup

4 in 1 bucket  
Spreader  
Ripper  
Cultivator

Now with  
Trencher

**RING JAMES  
0408 696-480**





# Balmoral Village Garage & Craft Sale

## 5th April 2008

### 9am at The Village Hall



Bring along your craft, your junk, the little things you have been hoarding for years & turn it into cash or just come along & bag a bargain!

SAUSAGE SIZZLE ALL DAY (or until sold out)

Book a Stall— \$30 Table Hire \$10 (1st in 1st served) Call Lyle 4889-8384

FREE COFFEE FOR STALL HOLDERS

Donations of Goods for Hall Stall Welcome—Call Larry Wilson 4889-8151

All proceeds to the Balmoral Village Association for the Hall upkeep



## *Clean Up Australia Day ~ Saturday 1st March 2008*

*Organised in Balmoral by the Fire Brigade.*

*Turn up at the Fireshed at 9.30am.*

*Lunch provided at conclusion of cleanup at 1.00pm*

**\*\*\*You will need to bring gloves, hat & sturdy boots\*\*\***

**PLUS ~ if you have a Ute or Trailer—Please bring it along**

**Contact Fireshed Wednesday Nights 48898387 or Paul Malia 48898146**



## REGIONAL SHOOTING FACILITY—HILL TOP

The Southern Highlands Regional Shooting Complex Inc, the new tenants of the existing rifle range on Wattle Ridge Road Hill Top have submitted an application to Wingecarribee Council to expand the use of the existing site to accommodate additional vehicles and shooters and more regular district and team competitions.

The Hill Top Residents Action Group (HTRAG) urges concerned

residents of Hill Top and Balmoral to object to this request via a submission to Council.

Key points to note include:

Increased noise activity  
Army use of site (mid-week from early am to pm) contributing to excessive noise without control over weapons and ammunition used.

Site is breeding area for Koala's  
Site contamination in other

ranges has forced costs of cleanup onto local councils.

**Submissions are required by 14 February 2008** and further information and draft submission forms will be available from the **Hill Top General Store.**

**Web:**

<http://nogunclub.tripod.com>

**Email:**

[nogunclub@optusnet.com.au](mailto:nogunclub@optusnet.com.au)

**Phone:**

0406 044677

## EQUINE INFLUENZA UPDATE....

From DPI Website—14 Jan 2008

NSW could be free of horse flu by the middle of March, acting Minister for Primary Industries, Verity Firth, said today. "Without a new infection in the coming weeks it is a real possibility that we can stamp out equine influenza in NSW by mid-March," Minister Firth said. "This is the best possible news for our horse industries, but I stress this all hinges on not one more single case in the coming weeks.

"In fact, in NSW the last horse to test positive was on 21 December. The horses involved probably became infected in early December. "A period of time without new infection after March will need to pass to ensure EI has been eradicated once and for all.

"With the help of horse owners,

we have been steadily making inroads into this disease. Our strategy has worked and now hard work is paying off." NSW chief veterinary officer, Bruce Christie, said there were now less than 250 infected properties in NSW. Most of the properties are now not actively infected and a process is underway to clear them.

"At the height of outbreak there were more than 5800 infected properties and more than 200 new infected properties detected per day," he said. "It is a remarkable effort to turn this disease around in such a short amount of time.

**Balmoral is now in the Amber Zone.**

There has been some relaxation on movement for horses in the amber zone which states:

You must obtain a movement permit before moving horses within the Amber Zone. All the situations listed here require a valid permit before movement can commence.

A permit may be obtained to walk or ride a horse within a distance of 5 km. The Permit is subject to a satisfactory risk assessment and the horse must return to the same property within the same day and must not contact any other horses along the way. These permits must be obtained before the journey, but could cover similar movements for up to one month.

**For more information go to:**  
**[www.dpi.nsw.gov.au](http://www.dpi.nsw.gov.au)**



**"The biggest little garden centre in the Wollondilly"**

Qualified horticulturalists can give you advice in store  
See how we pack a big range into a little garden centre  
See why we were finalists in the 2006 Business Awards

**152 Remembrance Dr  
Tahmoor NSW 2573  
Tel: 4681 9619  
Mob: 0438 PLANTS**



## COMMUNITY INFORMATION

## MOBILE LIBRARY—NEW TIME

## FORTNIGHTLY TUESDAY 1.45 - 2.15

The mobile library calls at Balmoral Village on Tuesdays between 1.45pm and 2.15pm on the following dates for the first half of 2008.

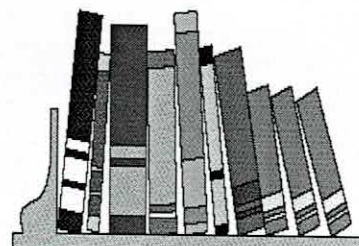
FEBRUARY 5, 19

MARCH 4, 18

APRIL 1, 15, 29

MAY 13, 27

JUNE 10, 24



## RUBBISH DUMPING

## Don't forget, You can Help

If you see rubbish dumping occurring or uncollected dumped rubbish, contact Council immediately. The sooner you act, the sooner action can be taken. Ring the Resource Recovery Centre Speak to Wayne Willis, Investigation Officer. Ph 48 680 504 FAX 48 681 501 email wayne.willis@wsc.nZsw.gov.au

## HALL HIRE

The hall, which is managed by the Association is available for hire. It is ideal for classes, parties or regular meetings etc. for very reasonable rates. Also for hire are the hall seats, tables and a marquee tent, ideal for people having parties at home. Contact Larry Wilson in advance, on 48 898 151.



Play Group Commences Feb 5th  
at the Village Hall

Tuesdays 9:30am-11:30am

Bring Along: a piece of fruit to share &  
your ideas.

The first few weeks will be a time of getting ideas together and no 'membership' is required—we can sort all that as we get a better idea of where we are heading!

For Enquiries Please Contact:

Jeanette 4889-8002 or Helena 4889-8157

## BUY, SWAP OR SELL IT HERE!!!

Call Jodie 0411274708

Or email:

balmoralvillageassoc@yahoo.com.au

~ RIDDLE ME SILLY ~  
FOR THE KIDS

1. What do you get when you saw a comedian in two?
2. What does the invisible man drink at snack time?
3. What did the beach say when the tide came in?

1. a half wit. 2. evaporated milk. 3. long time no sea

## THIRLMERE MEATS

Shop 4 Westbourne Ave. Thirlmere NSW 2572 - Phone/Fax: (02) 4681 8402

Mobile: 0438 842 085 or 0419 298 876

Email: thirlmeremeats@bigpond.com.au Web: www.thirlmeremeats.com.au



**CATERING, PRE-COOKED MEALS  
& HOME DELIVERY AVAILABLE**





# THE VILLAGE RAINGUAGE



Feb 07	Mar 07	Apr 07	May 07	Jun 07	Jul 07	Aug 07	Sep 07	Oct 07	Nov 07	Dec 07	Jan 08
Day ml's	Day ml's	Day ml's	Day ml's	Day ml's	Day ml's	Day ml's	Day ml's	Day ml's	Day ml's	Day ml's	Day ml's
1 2.0	1 4.5	6 6.8	9 3.0	7 9.0	8 5.0	15 1.0	4 4.0	24 5.0	1 3.0	3 3.5	4 2.0
8 2.5	4 7.5	24 1.0	17 23.0	8 23.0	9 5.5	16 3.0	5 3.5	25 5.0	2 25.5	7 21.0	12 13.0
10 64.0	5 4.0	25 11.0	18 15.0	9 19.0		18 3.5	6 3.0	26 23.0	3 10.5	8 9.5	13 8.5
11 55.0	6 4.0	28 9.0	21 1.0	14 65.0		19 28.0	7 7.0	28 3.5	5 2.0	9 7.5	16 1.0
13 13.0	8 9.0		29 3.0	15 50.0		20 9.0	8 3.0		6 13.5	11 5.0	19 35.0
19 8.0	17 11.0			16 21.0		22 5.5	20 10.0		7 15.0	13 7.0	20 12.5
22 16.0	19 6.0			18 2.5		23 3.0			8 9.5	16 27.5	
23 1.0	24 4.5			19 23.5					9 7.0	18 1.0	
24 44.0	25 1.5			25 13.5					21 4.5	19 5.0	
25 4.0				26 13.0						20 3.0	
26 4.0				27 2.0						21 5.5	
28 1.0				28 7.0						27 5.5	
29 7.0											
<b>Total 220.5</b>	<b>52.0</b>	<b>27.8</b>	<b>44.0</b>	<b>248.5</b>	<b>10.5</b>	<b>53.0</b>	<b>30.5</b>	<b>36.5</b>	<b>90.5</b>	<b>101.0</b>	<b>72.0</b>

\*Results collected by Lyle & Lisa Spears in Balmoral Village. Readings are taken each morning at 7:30am for the 24 previous hours.

## THE VILLAGE NOTICEBOARD

### Regular Events:

- \* **Balmoral Bushfire Brigade** Meet 1ST & 3rd Wednesday of each month — 7:30pm at fire shed. (business conducted 1st Wed. of month) Captain: Scott Whiting, ph 48 899 888
- \* **Village Association** meet second Tuesday night of the month, 7:30pm, Village Hall. President, Larry Wilson, ph 48 898151
- \* **Tennis club** play Wednesdays, 10:00am, at the tennis club (behind village hall)  
Contact Pat Lawrence, ph48 898 066
- \* **Playgroup**—Tuesday mornings 9.30am—11.30am At the Village Hall  
Contact Janette 48898002 or Helena 48898157

### Phone Numbers:

- \* Bush Fire Control Dial 000
- \* Tennis Club or Tennis Court bookings, phone Pat Lawrence, 48 898 066.
- \* Fire permits, Scott Whiting 48 899 888.
- \* Hall bookings, Larry Wilson, 48 898 151.
- \* Bowral Police: 48 629 299
- \* WIRES: 4862-1788 (Wingecarribee)

Balmoral Village Association Inc.

PO Box 87, Buxton NSW 2571

Phone: 4889-8151 E-mail: balmoralvillageassoc@yahoo.com.au

## THIRLMERE RAIL HERITAGE CENTRE

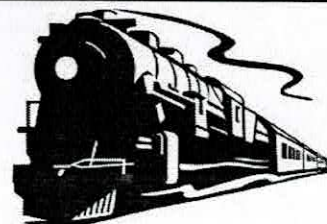
Open 7 days

Entry Discounts for Local Residents

Group Bookings Welcome

20 Barbour Road Thirlmere

www.nswrtm.com.au



(02) 4681 8001